



**LION**<sup>®</sup>  
ready for action

# **ATTACK™ DIGITAL FIRE TRAINING SYSTEM**

---

**[ USER'S MANUAL**

Original User Manual  
Version 2  
04/20



## NOTE

Read and follow all instructions within the user manuals of any other optional equipment or accessories used in conjunction with the ATTACK™.

## WARNING

There are no user serviceable parts inside the ATTACK panel. Attempting to open the unit or loosening screws on the back of the panel will void the warranty.

## WARNING

**Improper installation, adjustment, alteration, service or maintenance can cause injury or property damage.**

**Read the setup, operation and maintenance instructions thoroughly before installing or servicing this equipment.**

**Failure to follow these instructions could result in property damage, personal injury, or death.**



## CAUTION

**Class 3R Laser**  
Do not look directly into beam or view with telescopic devices.

# TABLE OF CONTENTS

- 1. HOW THE ATTACK™ WORKS ..... 2
- 2. FOR YOUR SAFETY..... 3
- 3. ATTACK TRAINING SYSTEM PARTS & ACCESSORIES ..... 4
- 4. ATTACK TRAINING SYSTEM SPECIFICATIONS ..... 5
- 5. PRODUCT INFORMATION ..... 6
- 6. OPTIONAL ACCESSORIES ..... 7
- 7. LION SERVICE PLANS ..... 10
- 8. OPERATING INSTRUCTIONS ..... 11
  - 8.1 SYSTEM SETUP AND INSPECTION ..... 11
  - 8.2 USING THE ATTACK ..... 18
  - 8.3 ADJUSTING THE SETTINGS..... 19
  - 8.4 CHANGING THE LANGUAGE..... 21
  - 8.5 INDUSTRIAL REMOTE (OPTIONAL) ..... 21
  - 8.6 CONDUCTING A SIMULATION USING THE ATTACK INDUSTRIAL REMOTE..... 23
- 9. EXTINGUISHER TRAINING WITH THE ATTACK ..... 24
- 10. ELECTRICAL FIRE TRAINING WITH THE ATTACK ..... 26
- 11. SHUT DOWN OPERATION..... 28
- 12. TRANSPORTATION INSTRUCTIONS ..... 29
- 13. MAINTENANCE INSTRUCTIONS ..... 30
- 14. WARRANTY INFORMATION ..... 31
- 15. CONTACT INFORMATION..... 33

**SAVE THESE INSTRUCTIONS FOR FUTURE REFERENCE**

# 1. HOW THE ATTACK™ WORKS

## **Congratulations on the purchase of your new ATTACK Digital Fire Training System.**

This state of the art training tool uses digital flame technology, sound effects, and smoke to provide a realistic training experience to learn proper fire extinguishment techniques. The ATTACK can sense the location and amount of the water hitting the panel. If the trainee has properly aimed the extinguishant and used an effective technique; the digital fire will be extinguished.

The ATTACK uses hundreds of LEDs and an on-board microprocessor to dynamically generate digital flames. Depending on the class of fire and level of difficulty selected by the instructor, the flames will grow, diminish and respond as the trainee attempts to extinguish the simulated fire.

Trainees can fight the ATTACK digital fire using any size hose line, a laser-driven infrared extinguisher, a pressurized air/water SmartExtinguisher®, or a conventional water extinguisher. There is an array of sensors on the ATTACK that allow the system to interact with the trainee and detect where and how the trainee is using the extinguishant. The system responds by increasing or decreasing the size of the flames in the area the user is hitting relative to the trainee's technique and efforts.

The ATTACK has three different modes that can be used based on the type of extinguisher being used. The modes are "laser", "water can", and "hose line". The "laser" mode is always on and allows a LION laser driven extinguisher or the LION digital hose line to be used. The "water can" mode is used when a LION SmartExtinguisher or a standard water extinguisher is used. Finally, the "hose line" mode is used with hose lines. Each mode has been carefully designed to react appropriately to the type of extinguisher being used.

To successfully extinguish the fire, the trainee must use an effective technique. If the trainee aims below or above the base of the fire, the flames will diminish, but will not be extinguished. If the trainee aims at only one side of the fire, that side will be extinguished while the other side continues to burn.

## 2. FOR YOUR SAFETY

1. The ATTACK™ is designed for firefighter training use only. Operators, trainees and observers involved in training or within proximity of training must wear proper PPE (personal protective equipment) in accordance with National Fire Protection Association (NFPA) and local fire training standards for live fire training.
2. The LION laser driven extinguisher uses a Class 3R laser module. Follow all instructions to avoid possible exposure to laser and collateral radiation. Do NOT alter laser module in any manner.
3. Only direct the laser at the ATTACK. Do not direct at any other object or person.
4. When using the air/water SmartExtinguisher®, water extinguisher, or hose line, only use where proper drainage is available or where water spillage will not cause risk to others. Ensure that the power supply unit, power connection outlet, and all other optional accessories, including the Smoke Generator, air compressor, laser extinguishers and any other electronic equipment do not come into contact with water or water mist spray.
5. Always use in accordance with all applicable local, state, and national codes. Contact your local fire department or authority having jurisdiction for details on fire extinguisher training.
6. Do not use this appliance without reading the entire User's Manual and the user manual of any optional equipment.
7. Use only in a well-ventilated area.
8. Do NOT position the ATTACK in an area with live fires. Do NOT expose the ATTACK to the heat of fire.
9. Do NOT drop the ATTACK.
10. Do NOT alter or modify this appliance in any manner. The ATTACK will not operate as designed or intended if modified and an unsafe situation may be created.
11. Do NOT use in an explosive atmosphere. Keep the areas surrounding the appliance free and clear from combustible materials, gasoline and other flammable liquids.
12. When using this appliance, exercise the same precautions you would with any electrical device.
13. If you are unsure of anything in these instructions, **STOP** and contact your distributor or LION for assistance.
14. This product should not be used with any power source other than what has been provided. Use of other power sources is dangerous and will void the warranty.
15. **Death, serious injury, or damage to property may occur if the above is not followed exactly.**



## WARNING

### DISCLAIMER

Purchaser assumes all risk in the assembly and operation of this unit. Failure to follow this manual's WARNINGS and instructions can result in severe personal injury, death, or property damage. LION is not responsible for any damage, death, or injury that may arise or result from improper or misuse of the ATTACK.

### 3. ATTACK™ TRAINING SYSTEM PARTS & ACCESSORIES

The ATTACK is intended to provide safe and cost effective hose line training, general firefighter training, and fire extinguisher training.

NUMBER	PART DESCRIPTION
1.	ATTACK Digital Fire Training System
2.	Weighted Base with Refillable Water Tank
3a.	Wireless Infrared Waterproof Remote
3b.	Handheld WiFi Industrial Remote (Optional)
4.	Transport Case for the ATTACK Panel
5.	ATTACK Mounting Bracket
6a.	Extinguisher 5 lb. (2.5 kg)
6b.	Extinguisher 10 lb. (6 kg)
6c.	Extinguisher 20 lb. (9 kg)
6d.	SmartExtinguisher® 5X
6e.	SmartExtinguisher 7X
7.	Smoke Generator 4000™ (Optional)
8.	Waterproof Case – Smoke Generator, WiFi enabled (optional)
9a.	Smoke Liquid (5 Liter, Optional)
9b.	Smoke Liquid (20 Liter, Optional)
10.	Extinguisher Transport Case
11.	Air Regulator
12.	Air Compressor
13.	Digital Nozzle

#### PARTS LIST

To order replacement parts, contact your distributor or LION.

## 4. ATTACK™ TRAINING SYSTEM SPECIFICATIONS

PHYSICAL SPECIFICATIONS	
Overall base unit dimensions	28.5"W x 22.5"H x 5"D (73 x 57 x 13 cm)
ATTACK Panel	ABS, polycarbonate, stainless steel
ATTACK Panel Weight	35 lbs. (16 kg)
Weighted Base	33 lbs. (15 kg) empty (400 lbs. [180 kg] filled with water)

ELECTRICAL	
Input	48VDC

CONTROLLERS	
Wireless infrared waterproof remote	
Handheld Wi-Fi Industrial Remote (Optional)	

## 5. PRODUCT INFORMATION

### A ATTACK

The ATTACK Training System senses where the user applies extinguishant and automatically varies the LED driven digital flames in response. The design makes the system rugged and highly portable. For training variation, the ATTACK can be used with the standard air/water SmartExtinguisher®, a water extinguisher, or a hose line.

### B HANDHELD SETUP WATERPROOF CONTROLLER

Control evolutions and change settings using this waterproof remote.

### C ATTACK WEIGHTED BASE/REFILLABLE WATER TANK

This portable mounting system allows you to anchor the panel to the ground in almost any location. The weighted base utilizes a folding water bag with a rigid bottom and a metal plate to attach to the ATTACK. When the reservoir is full it weighs 400 lbs. (180 kg) and ensures that the panel will stay in place when hit with a hose line. Once the training is complete the water is easily emptied using the drains at the bottom of the reservoir. If you are conducting extinguisher training, the anchor can be used without filling it with water to provide a convenient and secure stand to hold the panel.



### D USER MANUAL

### E LIMITED ONE YEAR WARRANTY

- See Section 13 for more details on the ATTACK warranty.





## 6. OPTIONAL ACCESSORIES

### A **ATTACK™ TRANSPORT CASE**

This black industrial grade high impact plastic case can be used to conveniently transport the ATTACK panel. Locking latches provide safe and secure storage of the ATTACK when not in use.

### B **ATTACK WALL MOUNTING BRACKET**

The mounting bracket allows you to mount your ATTACK on a floor, wall, or ceiling. The ATTACK quickly attaches and detaches from the mounting so the ATTACK can easily be moved from one location to another or so large arrays of panels can be set up quickly.

### C **WATERTIGHT SMOKE GENERATOR CASE WITH SMOKE GENERATOR 4000™**

This rugged case acts as a watertight housing for the Smoke Generator 4000 and control electronics. The case has enough room to store the accompanying 50 ft. (15 m) power cord with GFCI protector along with the 50 ft. (15 m) Ethernet cord going to the panel. The on-board control electronics allow the ATTACK to automatically control the Smoke Generator during a simulation. The Smoke Generator can be stored and transported in the case.



continues >

**D HANDHELD WATERPROOF WI-FI INDUSTRIAL REMOTE**

This rugged waterproof handheld remote allows the trainer to have full control over the ATTACK™ evolution. The remote uses Wi-Fi to communicate with the ATTACK so the simulation can be started without line of sight to the panel. The remote can be clipped to turnout gear or clothing for easy access and convenience.

**E BULLSEYE™ LASER EXTINGUISHERS**

Laser-driven extinguishers emit an intense laser pattern and sound effects to simulate an actual extinguisher.

- 5 lb. (2.5 kg) Dry Chem BullsEye system extinguisher
- 10 lb. (6 kg) Dry Chem BullsEye system extinguisher
- 20 lb. (9 kg) Dry Chem BullsEye system extinguisher.

**F BULLSEYE EXTINGUISHER TRANSPORT CASE\***

This black industrial grade high impact plastic case can be used to conveniently transport two BullsEye extinguishers. Locking latches provide safe and secure storage of the extinguishers when not in use.



*\*Product availability and design may differ based on market location.*

## **G** SMARTEXTINGUISHERS

Rechargeable training extinguishers with pressure gauge and Schrader recharge valve.

- 5X SmartExtinguisher®: discharges five times before requiring a water refill.
- 7X SmartExtinguisher: discharges seven times before requiring a water refill.

## **H** AIR COMPRESSOR WITH ACCESSORIES\*

## **I** AIR REGULATOR WITH ACCESSORIES\*

Recharge SmartExtinguishers from an SCBA tank (2,216 or 4,500 PSI [152.8 or 310.3 bar]) with this premium brass high pressure regulator assembly. Also includes brass fittings, and a high quality coiled air hose.

## **J** NFPA® FIRE EXTINGUISHERS AT WORK DVD/VHS\*\*

This presentation draws on the requirements in *NFPA 10: Portable Fire Extinguishers*, the Standard referenced by OSHA in developing its regulations. Covers everything from portable extinguisher basics to advanced strategies for workers in industrial environments. (17 min.)

## **K** LION EXTINGUISHER TAMPER SEALS

Lock your extinguisher handles in place for a realistic training experience with these tamper seals. Seals come 500 per package.



\*Product availability and design may differ based on market location.

\*\*NFPA IS A REGISTERED TRADEMARK OF THE NATIONAL FIRE PROTECTION ASSOCIATION, INC.

## 7. LION SERVICE PLANS

Purchasing a service contract offers you several advantages, including:

- Annual preventive maintenance of your equipment to keep it performing at optimal levels.
- Maintenance scheduling and tracking facilitated by LION.
- Parts and labor for preventative maintenance included in package for free.
- Priority over non-contract repairs.
- Discounted part costs.

### **WARNING**

There are no user serviceable parts inside the ATTACK™ panel. Attempting to open the unit or loosening screws on the back of the panel will void the warranty.

Please see page 31 for contact details.

### **WARNING**

Any damaged parts must be replaced prior to operating the ATTACK.  
Use of replacement parts that are not authorized by LION or are not original equipment parts supplied by LION will void the warranty.

## 8. OPERATING INSTRUCTIONS

### 8.1 SYSTEM SETUP AND INSPECTION

Unpack all parts, removing any packaging materials. Check for visible signs of damage that may have occurred during transport and call LION or an authorized dealer immediately to report any concerns.

#### SETTING UP THE ATTACK™ PANEL FOR USE WITH A HOSE LINE

1. Do NOT use the ATTACK without reading the entire **User's Manual** first.
2. The ATTACK panel must be supported by either the "weighted base" or the "wall mounting bracket" before using with a hose line or water extinguisher.

#### WEIGHTED BASE SETUP

1. To begin the set-up process using the weighted base, put the base on a flat hard surface that can hold at least 500 lbs. (226.8 kg).
2. Position the base such that the ATTACK panel will face the desired direction. You cannot reposition the weighted base when it is filled with water.
3. Open up the weighted base by unsnapping the two straps holding the two halves of the base together.
4. Position the weighted base so the side of the base with the ridges is on the floor, and the smooth side faces up.
5. Unfold the base such that the two sliding support legs fully extend and lock into place. The stop on the support legs prevents the legs from collapsing.

continues 



STEP 3



STEP 4

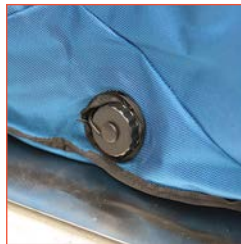


STEP 5

6. Next, slide the rear support bar back and insert the legs over the two bolts on the rear of the base plate.
7. Close the two plugs at the bottom of the water tank.
8. Fill the tank with water until it is full.
9. Connect the power cord to the back of the ATTACK™ panel. Do not use power cords that were not provided by LION. Align the triangle features on the connector and the plug. The power cord will always run towards the bottom of the panel when connected. Push the connector into the plug. There is no need to twist the collar on the plug. You will hear a click when the connector latches onto the plug correctly.
10. Insert the bottom of the panel into the bottom brackets on the weighted base.



STEP 6



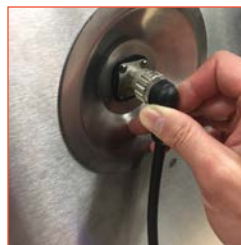
STEP 7



STEP 8



STEP 9 (A)



STEP 9 (B)



STEP 9 (C)

11. Push the top of the panel against the back plate of the weighted base until you hear the pin click into place.
12. Make sure the panel is securely mounted by pushing and pulling the panel in different directions.
13. Plug the power cord into the power supply, then plug the power supply into a Ground Fault Circuit Interrupter (GFCI)/Residual-Current Circuit Breaker (RCCB) outlet that is within a dry environment and will not come in contact with any water spray. When the power supply is successfully connected, a blue light will appear. The power supply to power cord connection and the power supply to wall outlet connection must be in a dry environment. The connection of the power cord to the panel can be in a wet environment.



STEP 11



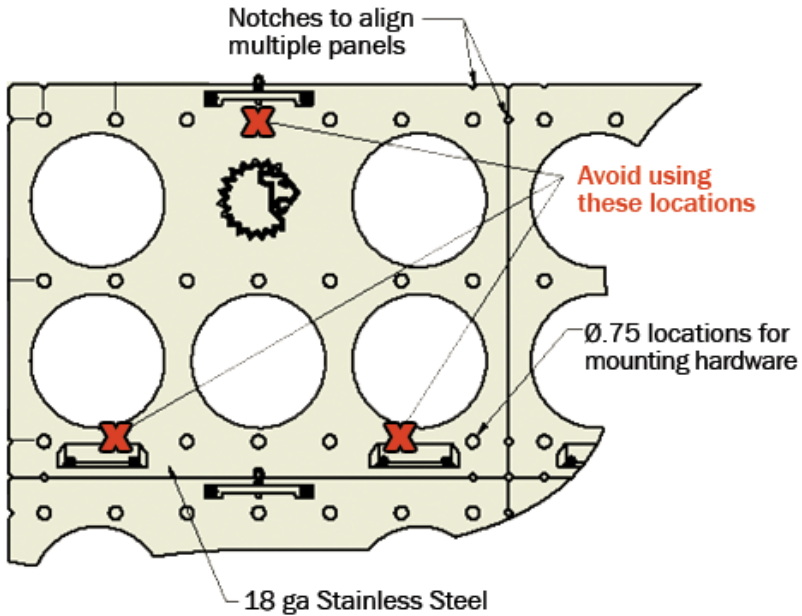
STEP 13 (A)



STEP 13 (B)

## WALL MOUNTING BRACKET SETUP

1. To begin the set-up process using the wall mounting bracket, locate a wall surface that can hold at least 50 lbs. (23 kg) (per panel), and will withstand 150 PSI (10.3 bar) water from any size hose line. Multiple brackets may be used for multi-panel set-ups. See figure below for guidance.



2. Mount the bracket to the wall in the desired location. LION does not supply mounting hardware for this bracket. Choose hardware using appropriate hardware for the wall structure that:
  - a. Will support at least 50 lbs. (23 kg) using at least 4 mounting location on each bracket.
  - b. Has a fastener head plus washer height of 0.5 in. (1.27 cm.) or less.



3. Mounting holes are large to allow the use of washers which facilitate misaligned wall fasteners. Recommended washer outer diameter is 1 in. (2.54 cm.) to 1.5 in. (3.81 cm.).
4. If wall is uneven, add spacers behind bracket as needed to avoid bending as a bent bracket will impede mounting of the ATTACK™ panel.
5. Connect the power cord to the back of the ATTACK panel. Do not use power cords that were not provided by LION. Align the triangle features on the connector and the plug. The power cord will always run towards the bottom of the panel when connected. Push the connector into the plug. There is no need to twist the collar on the plug. You will hear a click when the connector latches onto the plug correctly. .
6. Insert the bottom of the panel into the bottom brackets on the wall mounting bracket.
7. Push the top of the panel against the back plate of the bracket until you hear the pin click into place.
8. Make sure the panel is securely mounted by pushing and pulling the panel in different directions.
9. Plug the power cord into the power supply, then plug the power supply into a Ground Fault Circuit Interrupter (GFCI)/Residual-Current Circuit Breaker (RCCB) outlet that is within a dry environment and will not come in contact with any water spray. When the power supply is successfully connected, a blue light will appear. The power supply to power cord connection and the power supply to wall outlet connection must be in a dry environment. The connection of the power cord to the panel can be in a wet environment.

## **NOTE**

It is imperative that the ATTACK be kept clean and dry when not in use.

**SETTING UP THE OPTIONAL WATERTIGHT SMOKE GENERATOR CASE**

1. Read and follow all instructions in the Smoke Generator user manual.
2. Position the Smoke Generator Case in a desired location that is within 50 ft. (15.24 m) of a power source that can provide 15 amps of power.

**NOTE**

The case can get wet; however, it is not recommended that it get sprayed directly with a hose line.

3. Connect the provided power cord to the Smoke Generator Case. The connector for the power cord is located on the hinged side of the case and is covered by a blue cap when not in use. Unscrew the cap and secure the power cord. Note that the connector is “keyed” so the cord will only attach to the connector when lined up with the features on the connector. Secure the connector by rotating the blue collar clockwise until it is snug.
4. For owners using a previously purchased LION Smoke Generator 4000™, you will need to install the provided nozzle plugs onto your Smoke Generator to protect the Smoke Generator from water entry through the nozzle. If plugs are not installed, damage to property or personal injury may result.
5. Run the power cord to a Ground Fault Circuit Interrupter (GFCI)/Residual-Current Circuit Breaker (RCCB) outlet. You may need to push the reset button on the GFCI power cord to ensure that the GFCI is supplying power.

**⚠ WARNING**

Use the power cord provided by LION with the integrated GFCI. Do not alter the power cord or defeat the GFCI. Failure to follow these instructions could result in property damage, personal injury, or death.



STEP 2



STEP 4

6. Make sure the Smoke Generator is properly installed in the case with the Smoke Generator sitting on the bottom of the case with the nozzle inserted through the side of the case. Strap the smoke generator down using the red strap and black cam buckle.
7. Unscrew the cap on the fluid tank of the reservoir one quarter turn to allow the tank to breathe during operation. It is critical that the cap be retightened before moving the smoke generator in order to avoid spills.
8. Connect the power cable and signal cable between the case and the Smoke Generator.
9. Turn on the Smoke Generator. More information on the operation of the Smoke Generator can be found in the Smoke Generator 4000™ User's Manual.
10. Set the Smoke Generator 4000 to DMX mode at channel 100. Press the **Menu** button and use the **UP** and **DOWN** buttons to select DMX in the bottom right corner. Press **ENTER** and use the **UP** and **DOWN** buttons to change the DMX channel to 100.



STEP 6



STEP 9

## NOTE

The Smoke Generator 4000 must be set to DMX mode channel 100 for the ATTACK™ to control the Smoke Generator.

11. Once the Smoke Generator is set up, securely latch the cover using all of the latches.

## NOTE

Ensure that all latches on the cover are secure. Failure to properly secure all latches may result in water getting into the case and damaging the electrical components.

12. To use the Smoke Generator 4000 without the waterproof case, refer to the guidelines outlined in the Smoke Generator 4000 manual. Please note, the Smoke Generator 4000 is in **DMX mode** when used with the ATTACK. To use the Smoke Generator 4000 without the ATTACK, you may need to change the control setting on the Smoke Generator 4000.

## 8.2 USING THE ATTACK™

1. Once power is connected to the ATTACK panel, a red light\* is displayed on the front of the panel to indicate power is supplied to the unit.
2. The ATTACK panel will boot up automatically when power is supplied. This can take several minutes. When it boots, you will see a LION graphic and hear three beeps.
3. The panel is now ready for use, and the settings can be verified or adjusted as desired. A green light\* is displayed on the front of the panel to indicate the unit is ready for use.

\* The red or green indicator lights are visible when looking straight on at the unit. They may not be clearly visible from side angles or when the unit is in a very bright environment. This indicator light is turned off during a training simulation.

### USING THE ATTACK WITH MULTIPLE PANELS

Multiple ATTACK panels can be used together for training.

In a scenario where secondary panels are being used, the secondary panel has all the features of the primary ATTACK panel, but must be in range of the primary panel in order to operate. The necessary range between the two panels will vary based on your training environment.

If a panel is not connected wirelessly to the primary panel, an **X** will be displayed on the panel when it is powered on.

Secondary panels cannot be used independent of the primary panel. If you are interested in using the panels independently of one another, call LION for software upgrade information.

Contact LION for support making scenarios where multiple ATTACK panels are mounted edge-to-edge in a grid to simulate a fire larger than one ATTACK panel. This is a custom installation and requires a custom setup.

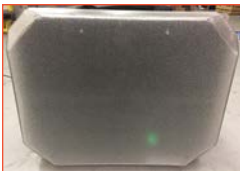
When using the Industrial Remote – all panels that are linked to the Industrial Remote will react to all button presses.



STEP 1



STEP 2



STEP 3



"X" DISPLAYED ON SCREEN

## 8.3 ADJUSTING THE SETTINGS

### SELECTING THE EXTINGUISHING METHOD MODE

The ATTACK™ panel can be used with a LION SmartExtinguisher®, a standard water can extinguisher, a LION laser driven extinguisher, a LION digital hose line or an actual hose line. The panel is designed to react to each extinguishing method differently. Thus, the appropriate mode of operation must be selected for the panel to respond correctly.

1. To select the extinguishing mode, simply press the **MODE SELECT** button on the setup remote.
2. The panel will display the current mode the first time a button is pressed. Subsequent pushes will change the mode.
  - The modes are “water can”, and “hose line”. The “water can” mode is used when a LION SmartExtinguisher or a standard water extinguisher is used. The “hose line” mode is used with hose lines. Regardless of the mode selected, the panel will always respond when used with a LION laser driven extinguisher or the LION digital hose line is used.

### SETTING THE DIFFICULTY LEVEL, SMOKE LEVEL, AND VOLUME

1. To change the desired setting, simply press the **UP** or **DOWN** arrows above or below the feature you wish to change on the Setup Remote.
2. When adjusting the setting, an indicator bar will appear on the screen. The indicator bar will fill as the level is increased.
3. Press and hold the adjustment button to rapidly change the setting.
4. **Please note:** The range of the standard remote is diminished when heavy smoke is introduced. If the remote is not functioning, you may need to stand closer to the ATTACK panel.

continues >



8.3 EXTINGUISHING MODE  
STEP 2



8.3 DIFFICULTY LEVEL  
STEP 2



STEP 1




STEP 2

## CHANGING THE CLASS OF FIRE SIMULATION

The ATTACK™ can simulate combustible materials, flammable liquids, flammable gas and electrical fires. The fires all respond differently to simulate the different kinds of fire. For example, combustible material fires respond by gradually diminishing with the proper application of extinguishant, while flammable liquid fires are easily “knocked down” by a single sweep but are quick to “flare up” if enough extinguishant is not discharged.

1. Use the **FIRE CLASS** button on the Setup Remote to select the class of fire to simulate.
2. The current Class will be displayed on the screen with the first button press. Subsequent button presses will change the setting.

Fuel Source	EN (US)	EN (UK)	DE	ES	FR	NL
						
<b>Combustible Materials</b>	Class A	Class A	Klasse A	Clase A	Classe A	Klasse A
<b>Flammable Liquids</b>	Class B	Class B	Klasse B	Clase B	Classe B	Klasse B
<b>Flammable Gas</b>	-	Class C	Klasse C	Gas Inflamable	Classe C	Klasse C
<b>Electrical</b>	Class C	Electrical	Elektrik	Clase C	Consommation électrique	Elektrisch

3. When simulating flammable gas and electrical fires, the fire will continuously re-ignite. In the case of a real flammable gas fire, the gas source must be turned off to prevent re-ignition. In the case of a real electrical fire, the power must be turned off to prevent re-ignition. To simulate this, once the trainee tells the instructor that the gas leak or power has been secured, the instructor can change the class to “a Common Combustibles fire” by pressing the up or down arrow for fire class on the remote. The fire will continue to burn but can now be extinguished.

### NOTE

The instructor is responsible for determining a suitable mode and level for the trainee.

## 8.4 CHANGING THE LANGUAGE

If you live in an English-speaking country, chances are that your ATTACK™ has been pre-set to an English language. However, you have the option of changing the operating system into Dutch, French, German or Spanish.

- Step 1.** Press the blue button on the wireless remote to open the language selection menu.
- Step 2.** When the language menu opens, select the language of your choice by pressing on the blue button. You may choose from Dutch, English (UK), English (US), French, German and Spanish.
- Step 3.** Press any of the other buttons on the remote to continue, your menu options will now be in your desired language.

## 8.5 INDUSTRIAL REMOTE (OPTIONAL)

The Industrial Remote is intended to be a rugged and waterproof remote that can be carried by the trainer during an evolution. It can be attached to turnout gear so it is always easily accessible. The large buttons make the controller easy to use with gloves on. The front of the remote is illuminated when the remote is on so the correct buttons can be found easily.

The Industrial Remote communicates with the ATTACK using standard Wi-Fi. Therefore, the Industrial Remote can be used outside the training room to control an evolution as long as the remote is within range of the ATTACK. The LED below the link button on the front of the remote indicates that the remote is linked with the ATTACK. The LED is green when the remote is linked and communicating with a panel. The LED is red when the remote is not communicating with a linked panel.

The Industrial Remote is powered by four AA batteries. The battery indicator LEDs on the bottom right on the front of the remote indicate the battery level. All three LEDs are illuminated when the battery is full while one LED will blink when the battery is nearly depleted. LION recommends using Panasonic “eneloop pro” Ni-MH batteries as a rechargeable option or Energizer Ultimate Lithium batteries as a non-rechargeable option.

**Do not use 3.7V lithium batteries in the remote.**

## USING THE INDUSTRIAL REMOTE

1. When the Industrial Remote is first taken “out of the box,” it is not paired with any ATTACK™ panels and will not control anything. *Once the Industrial Remote and panel are linked, you do not need to repeat this procedure.*
2. Turn on the Industrial Remote by pressing the **ON** button for at least a half second. The face of the remote will illuminate and after a few seconds the vibrator and backlight will pulse three times to indicate that the remote is on.
3. Linking the remote to a panel can be done by pressing and holding the **link** button until it vibrates. The link LED will blink three times and any panels connected by network to the remote will beep, indicating that they have been paired to the remote. At this time, the link LED will be green indicating that the remote is communicating with one or more linked panels and the remote will control those panels.
4. If pairing is done a second time, the remote will be unpaired from all panels with which it was previously paired, and be paired with all panels it is communicating with at the time the link procedure is conducted.
5. When the **START** button is pressed, all panels that are turned on and paired with the remote will begin an evolution. Similarly, all panels connected to the remote will react to each button on the Industrial Remote as it is pressed. The remote will vibrate and the backlight will pulse to indicate that a button has been pressed.
6. To turn off the Industrial Remote, press and hold the **OFF** button for 5 seconds until it vibrates. The backlight and all LED lights will turn off, indicating that the remote is turned off.
7. After 60 minutes of inactivity, the remote will turn off to conserve the battery.
8. The battery indicator lights will change depending on remaining battery capacity. The last LED will start blinking when the battery is running low. The indicator lights are designed for the recommended lithium and Ni-MH batteries; when using Alkaline batteries the last LED will start blinking when approximately half the battery capacity remains.



STEP 1



## CHANGING THE BATTERIES

There is a battery compartment located on the back of the remote. Use a #1 Phillips screwdriver to remove the two screws holding the compartment door in place.

Install new batteries following the diagram inside the battery compartment.

Reinstall the battery compartment cover. Note that the battery compartment is water-tight and has a light gray seal to prevent water intrusion. Debris on the seal can cause water leaks so be careful to keep the seal clean. The screws should be tightened to 6.2 in-lbf (70 N-cm) of torque. Over tightening the screws could damage the remote.

## 8.6 CONDUCTING A SIMULATION USING THE ATTACK™ INDUSTRIAL REMOTE



## 9. EXTINGUISHER TRAINING WITH THE ATTACK™

### **WARNING**

This appliance uses a Class 3R laser module. Do not alter laser module in any manner. Do not look directly into beam or view with telescopic devices. Do not direct laser at any person.

### TRAINING EVOLUTION PREPARATION

1. Ensure that the ATTACK is set up per the instructions in the section titled, “**Setting Up The ATTACK Panel For Use With A Hose line**”. The weighted base does not need to be filled with water. Do not place any sharp or jagged objects into the water reservoir to avoid tearing the lining.
2. If training using a “BullsEye™ laser extinguisher”, ensure that the BullsEye™ laser extinguisher is charged and turned on.
3. If training using “Water Can” mode, ensure that the SmartExtinguisher® or water can is properly charged with water and air.
4. Ensure that no personnel or items are in the vicinity of the ATTACK.
5. Ensure that the trainee is prepared to “extinguish” the fire.
6. Ensure that the appropriate difficulty and fire class settings have been selected.

## CONDUCTING THE TRAINING EVOLUTION

1. Press the **START** button on the Setup Remote.
2. Using the **PASS** Technique, the trainee should **Pull** the extinguisher pin, **Aim** the hose at the base of the fire, **Squeeze** the handle and **Sweep** the extinguisher. The same general PASS technique should be employed with the BullsEye™ laser extinguishers, an air/water SmartExtinguisher®, or a water can.
3. If the trainee properly aims and sweeps the extinguisher, the flames will eventually be extinguished.
4. If the trainee does not aim and sweep properly, the flames will not be fully extinguished. Flames have the ability to rekindle or flare-up if not fully extinguished.
5. SmartExtinguishers and BullsEye extinguishers are designed to provide the trainee with a discharge time that corresponds to an actual dry chemical extinguisher of the same size.
6. The ATTACK's digital flames can be stopped at any time by pressing the **STOP** button on the Setup Remote.
7. Note that commands from the setup remote may be ignored by the panel when laser extinguishers or digital hand lines are being aimed at the ATTACK™ panel.
8. For the next evolution, ensure that the training extinguishers are recharged.
  - a. To reset the laser extinguisher for the next trainee, simply press the power switch again. This prepares the extinguisher for the next evolution and will enable a full “discharge” for the next user.
  - b. For the air/water SmartExtinguishers, recharge with compressed air until the gauge reads 100 PSI (6.9 bar) and reset the pin. Tamper Seals can be placed on the extinguisher pin to provide additional realism and further challenge trainees. Water refills are required approximately every five or seven discharges depending on the size of the extinguisher.

## 10. ELECTRICAL FIRE TRAINING WITH THE ATTACK™

Fire calls become increasingly dangerous when the fire is electrically charged. Training to recognize the clues and how to properly respond is important. The ATTACK can be used in conjunction with LION R.A.C.E STATION ELECTRIC CUTOFF SWITCH PROP to make these trainings more immersive and realistic. During a training evolution if the trainee hears the fire on the digital panel making an electrical arcing noise, they must locate and activate the Electrical Cutoff Switch. Once the prop is activated, the sound of the fire will change from electrical arcing to the sound of a common combustible fire and the fire will be able to be extinguished.

### NOTE

If you don't have the Electric Cutoff prop, it is possible to manually simulate this scenario. Once the trainee tells the instructor that the power has been secured, the instructor can change the class to "a Common Combustibles fire" by pressing the up or down arrow for fire class on the remote. The fire will continue to burn but can now be extinguished.

### TRAINING EVOLUTION PREPARATION

1. Ensure that the ATTACK is set up per the instructions in the section titled, "**Setting Up The ATTACK Panel For Use With A Hose line**". The weighted base does not need to be filled with water. Do not place any sharp or jagged objects into the water reservoir to avoid tearing the lining.
2. If training using a R.A.C.E. Station with Electric Cutoff Switch prop, ensure it is set up per the R.A.C.E. Station User Manual.
3. If using the digital panel without a prop, be prepared to manually change fire class during the training evolution.
4. Ensure that no personnel or items are in the vicinity of the ATTACK.
5. Ensure that the trainee is prepared to "extinguish" the fire.
6. Ensure the appropriate difficulty and make sure the electrical fire class has been set.

## CONDUCTING THE TRAINING EVOLUTION

1. Press the START button on the Setup Remote.
2. Allow the fire to develop. The sound of the fire will include electrical arcing.
3. If the trainee correctly identifies the electrical charge and turns off the power (either with the Electric Cutoff Switch or Setup Remote), the fire will be able to be extinguished.
4. If the trainee doesn't remove the electrical charge, the flames will not be able to be extinguished. Flames may be knocked down but will quickly rekindle until the electrical source is removed.
5. The ATTACK's digital flames can be stopped at any time by pressing the STOP button on the Setup Remote.
6. Note that commands from the Setup Remote may be ignored by the panel when laser extinguishers or digital hand lines are being aimed at the ATTACK™ panel.
7. For the next evolution, reset the prop (if applicable) and verify settings on the Setup Remote.

## 11. SHUT DOWN OPERATION

1. To shut down the ATTACK™ when running, press the **STOP** button on the Setup Remote.
2. Unplug the power supply from the wall.
3. Remove the ATTACK panel from the Weighted Base by pulling up on the lock pin.
4. Unplug the power cord from the unit by twisting the collar on the connector counterclockwise, then pulling the connector away from the unit.
5. Drain the water from the Weighted Base by opening the two drain plugs on the sides of the tank.
6. Once the Weighted Base is empty, lift the rear support off the bolts on the bottom of the bag and slide the bottom of the legs forward.
7. Fold up the Weighted Base. To disengage the sliding legs, extend them slightly and pull the locking mechanism out of the way. The anchor can now be folded up.
8. Secure the two button straps to keep the Weighted Base folded up.
9. Wipe down all surfaces of the ATTACK, cord and Weighted Base.
10. If you are using a Smoke Generator case, unplug the power cord from the wall. Then, unplug the power cord from the Smoke Generator case by turning the collar counterclockwise. Reinstall the cap by turning clockwise.
11. After wiping cords down, they may be stored inside the Smoke Generator case.



STEP 4



STEP 4

## 12. TRANSPORTATION INSTRUCTIONS

The ATTACK™ Digital Training System is ready for transport after the steps of the “**Shut Down Operation**” have been performed.

When transporting the ATTACK, the following procedures should be followed:

1. The laser extinguisher should be turned off with the hose firmly positioned within the hose clip. Store and transport the laser driven extinguisher in a protective box or case. Be careful not to knock or drop the laser extinguisher during transportation. Be sure to charge your laser extinguishers every 3–6 months during long storage periods.
2. SmartExtinguishers **MUST** be de-pressurized prior to transportation. During transportation, LION recommends removing the headstock of the SmartExtinguishers to ensure that they are de-pressurized.
3. SmartExtinguishers should be drained of water and allowed to dry before transporting.
4. The ATTACK and all its parts should be completely clean and dry prior to transportation and/or storage.
5. During long-term storage, leave all cases open to allow unit to dry out. Closing wet parts in the storage cases will cause corrosion and possible mold growth.
6. Transport cases for the ATTACK Panel and weighted base are available from LION.
7. Do not ship the Smoke Generator in the watertight case unless it is in an additional box that provides adequate cushion to prevent damage.

## 13. MAINTENANCE INSTRUCTIONS

### GENERAL MAINTENANCE

- Never loosen any of the screws on the back of the ATTACK™ panel. Doing so will allow water into the unit causing failures, it will also void the product warranty.
- There are no user serviceable parts inside the ATTACK panel.
- Surfaces of the appliance may be cleaned with a general non-abrasive household cleaner. Only clean the ATTACK when it is NOT powered on, in use, or plugged in.
- Do not use petroleum-based cleaners to clean any component of the appliance.
- Inspect the ATTACK and SmartExtinguishers prior to each use.
- Fully charge the laser driven extinguishers prior to and after each training session.
- All damaged parts must be replaced prior to operating the ATTACK. Do not use if there are any signs of damage. The replacement parts shall be specified by the manufacturer. Using any other parts may cause the ATTACK to function improperly and could lead to injury. Use of unauthorized parts will void the warranty.
- Do not inspect, adjust, or service the laser module.
- Inspect the air/water SmartExtinguishers prior to each use.
- If there are any signs of damage or rust on the cylinder body, do not use the SmartExtinguisher® and contact LION immediately for further support.

Refer to the Smoke Generator User's Manual for information on maintaining the Smoke Generator.

DO NOT USE LUBRICANTS ON ANY PART OF THE SYSTEM.

- Hard water deposits may collect on the SmartExtinguisher siphon tube. The siphon tube should be wiped down and cleaned after use. Cleaning can be done with a general household cleaning agent and a cloth.
- The SmartExtinguishers should be Hydro-Tested by a qualified Fire Equipment Dealer every year as if they were actual fire extinguishers.



## 14. WARRANTY INFORMATION

All parts such as stainless steel sheet metal components and controls are covered and LION will provide replacement parts free of charge during the warranty period. The warranty period shall begin on the ship date and continue for one full year. Batteries are covered under this warranty for a period of ninety days from the ship date. Labor related to warranty repair is covered free of charge during the warranty period. Repair work, however, requires the prior approval of an authorized company official. Labor costs to the account of LION are based on a predetermined rate schedule and any repair work must be done through an authorized LION dealer. This warranty covers labor and parts related defects. This warranty does not cover neglect, accidents, misuse, or negligence on the operator's part.

### CONDITIONS AND LIMITATIONS

LION warrants its products against manufacturing defects to the original purchaser only – i.e., the individual or legal entity (registered customer) whose name appears on invoice for the ATTACK™ Digital Fire Training System, provided that the purchase was made through LION or an authorized LION dealer and is subject to the following conditions and limitations:

This factory warranty is nontransferable and may not be extended whatsoever by any of our representatives.

Assembly and use must be done in accordance with the instructions included with the product and all local and national fire codes.

This Limited Warranty does not cover any damage caused by misuse, lack of maintenance, hostile environments, accident, alterations, abuse, or neglect. Parts installed by other manufacturers will void the warranty.

This Limited Warranty does not cover scratches, dents, damage to the panel, cracked or broken screens, or corrosion. Abrasive and chemical cleaners will also damage the appliance. In the first year, this warranty extends to the repair or replacement of warranted parts which are defective in material or workmanship provided that the product has been operated in accordance with the operation instructions and under normal conditions.

After the first year, LION will not be responsible for replacement part expense, installation, labor or any other costs or expenses related to the reinstallation of a replacement part, and such expenses are not covered by this warranty.

continues 

Notwithstanding any provisions contained in this Limited Warranty, LION's responsibility under this warranty is defined as above and it shall not in any event extend to any incidental, consequential or indirect damages.

This warranty defines the obligations and liability of LION with respect to the LION electronic appliance and any other warranties expressed or implied with respect to this product.

This limited warranty does not cover damages resulting from the use of components not supplied with the appliance.

Any damages to appliance due to weather, long periods of exposure to dampness, condensation, damaging chemicals or cleaners will not be the responsibility of LION.

The original bill of sale or copy will be required together with a serial number and a model number when making any warranty claims from LION or authorized dealer.

LION reserves the right to have its representative inspect any product or part thereof prior to honoring any warranty claim.

LION or its representatives shall not be liable for ANY transportation charges, labor charges or duties.

## 15. CONTACT INFORMATION

### LION

North America | South America  
7200 Poe Avenue, Suite 4000  
Dayton, OH 45414, U.S.A.  
info@lionprotects.com  
800-548-6614 (PPE)  
888-428-5539 (Training)

Europe | Middle East | Asia  
Industrieweg 5, 5111 ND  
Baarle-Nassau, The Netherlands  
infoEMEA@lionprotects.com  
0031-13-507-6800



[WWW.LIONPROTECTS.COM](http://WWW.LIONPROTECTS.COM)

---

[ Manufactured in the USA

© LION Group, Inc. All rights reserved.